

**BALDOR® • RELIANCE** 

**Product Information Packet**

**SUL50204SM**

**2HP,1725RPM,1PH,60HZ,180TY,XPNV,V1**

Part Detail							
Revision:	A	Status:	PRD/A	Change #:		Proprietary:	No
Type:	AC	Elec. Spec:	A00096A A 002	CD Diagram:		Mfg Plant:	
Mech. Spec:		Layout:	066930-701	Poles:	04	Created Date:	11-14-2018
Base:		Eff. Date:	01-14-2020	Leads:			

Specs			
Catalog Number:	SUL50204SM	Duty Rating:	CONT
Enclosure:	XPNV	Heater Indicator:	No Heater
Frame:	180TY	Insulation Class:	F
Frame Material:	Iron	Inverter Code:	Not Inverter
Output @ Frequency:	2.000 @ 60 HZ	IP Rating:	NONE
Voltage @ Frequency:	230 V @ 60 HZ	KVA Code:	J
	115 V @ 60 HZ	Lifting Lugs:	Standard Lifting Lugs
XP Class and Group:	CLI GP C,D	Motor Type:	M
XP Division:	Not Applicable	Mounting Arrangement:	V1
Agency Approvals:	UL	Product Family:	Pump - Centrifugal
	CSA	Pulley End Bearing Type:	Ball
	CCSA US	Pulley Face Code:	Standard
Base Indicator:	Rigid	Shaft Rotation:	Fixed Opposite Standard
Bearing Grease Type:	Polyrex EM (-20F +300F)	Shaft Slinger Indicator:	No Slinger
Current @ Voltage:	14.4 A @ 230 V	Speed Code:	Single Speed
	28.8 A @ 115 V	Motor Standards:	NEMA
Design Code:	L	Starting Method:	Direct on line
Drip Cover:	No Drip Cover	Thermal Device - Winding:	Normally Closed Thermostat

XP Temp Code:

T3C

<b>Nameplate 000613007MN</b>									
<b>CAT NO</b>	SUL50204SM		<b>SPEC NO.</b>	S18-A000-0292					
<b>HP</b>	2.0	<b>AMPS</b>	14.5	<b>VOLTS</b>	230		<b>DESIGN</b>	L	
<b>FRAME SIZE</b>	180TY	<b>RPM</b>	1725	<b>HZ</b>	60	<b>AMB</b>	40	<b>SF</b>	1.15
<b>D.E. BRG.</b>	50BC02JPP30A		<b>PH</b>	1	<b>DUTY</b>	*		<b>INSUL</b>	F
<b>O.D.E. BRG.</b>	25BC02JPG30A		<b>TYPE</b>	CS	<b>ENCL</b>	TENV		<b>CODE</b>	J
			<b>POWER FACTOR</b>			<b>NEMA-NOM-EFF</b>			
			<b>MAX CORR KVAR</b>			<b>GUARANTEED EFFICIENCY</b>			
				<b>NEMA NOM/CSA QUOTED EFF @</b>		<b>100% LOAD</b>			
<b>SER.NO.</b>			<b>MOTOR WEIGHT</b>			<b>LBS.</b>			
	*15 MIN IN AIR ;SUB. IN								
	SEWAGE / WATER ONLY MAXDEPTH								
	IN MANUAL								

**Nameplate 000692000MB**

CONTROL BOX 701455-23H

MODEL # S18-A000-0292

2 HP ; 1725 RPM ; 230 VOLTS;

14.5 AMPS ; 60 HZ ; 1 PHASE;

W/D 414711-1A

FINAL CONNECT AT 230V

DO NOT MOUNT IN HAZARDOUS

LOCATION

Nameplate 000613007AC		
CLASS I GROUP	C D X	NO. <input type="text"/>
CLASS II GROUP	X X X	
OPERATING TEMP CODE	T3C	

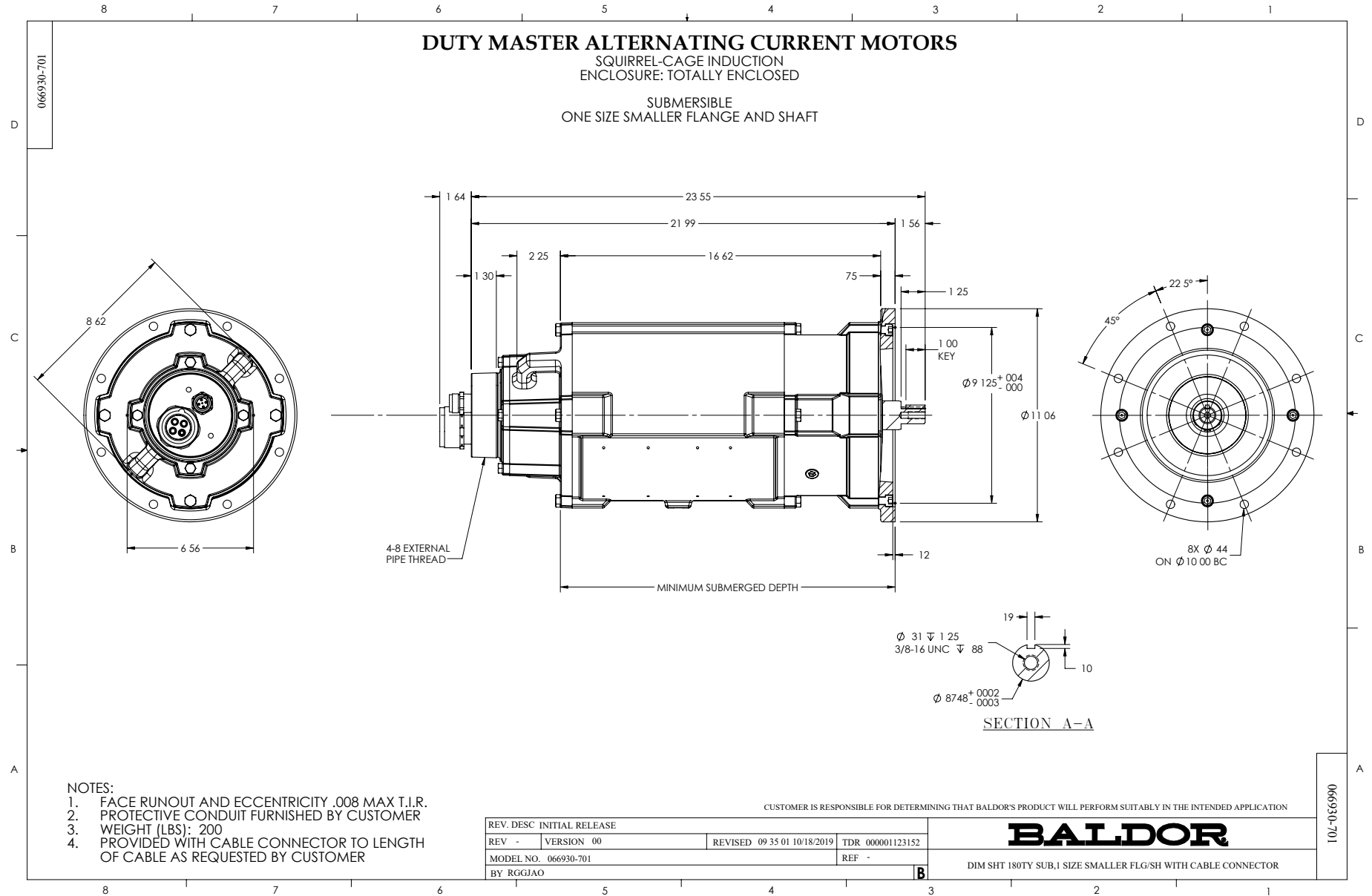
<b>Nameplate 000613007MR</b>									
<b>CAT NO</b>	SUL50204SM		<b>SPEC NO.</b>	S18-A000-0292					
<b>HP</b>	2.0	<b>AMPS</b>	14.5	<b>VOLTS</b>	230		<b>DESIGN</b>	L	
<b>FRAME SIZE</b>	180TY	<b>RPM</b>	1725	<b>HZ</b>	60	<b>AMB</b>	40	<b>SF</b>	1.15
<b>D.E. BRG.</b>	50BC02JPP30A		<b>PH</b>	1	<b>DUTY</b>	*		<b>INSUL</b>	F
<b>O.D.E. BRG.</b>	25BC02JPG30A		<b>TYPE</b>	CS	<b>ENCL</b>	TENV		<b>CODE</b>	J
			<b>POWER FACTOR</b>			<b>NEMA-NOM-EFF</b>			
			<b>MAX CORR KVAR</b>			<b>GUARANTEED EFFICIENCY</b>			
				<b>NEMA NOM/CSA QUOTED EFF @</b>			<b>100% LOAD</b>		
<b>SER.NO.</b>				<b>MOTOR WEIGHT</b>			<b>LBS.</b>		
	*15 MIN IN AIR ;SUB. IN								
	SEWAGE / WATER ONLY MAXDEPTH								
	IN MANUAL								

Parts List		
Part Number	Description	Quantity
SA363020	SA S18-A000-0292	1.000 EA
RA352275	RA S18-A000-0292	1.000 EA
424476003ZA	WIRING DIAGRAM MEDIUMA	1.000 EA
424476003ZA	WIRING DIAGRAM MEDIUMA	1.000 EA
000901001AA	LABEL WARNING	1.000 EA
000692000EJ	NAME PLATE	1.000 EA
000613007MN	NP,MEDIUM AC,NO CERT,STD INDUSTRIAL	1.000 EA
000613000FX	ROTATION NAMEPLATE, STAINLESS STEEL	1.000 EA
000692000HG	N/P	1.000 EA
000692000MB	BALDOR RELIANCE MOTOR DATA NAMEPLATE	1.000 EA
000901001AA	LABEL WARNING	1.000 EA
000613007AC	UL NAMEPLATE FOR HAZARDOUS LOCATIONS	1.000 EA
000613007MR	NP, MEDIUM AC, CSA, STD INDUSTRIAL	1.000 EA
034692002AE	HCSPP 1/4" 304 S.S.	1.000 EA
088203001AB	BRKT,ODE,180SUB 88203-1WB	1.000 EA
004824015A	GREASE POLYREX EM	0.100 LB
032018010CG	HHCS 3/8-16X1-1/4L 316SS V2T23	4.000 EA
421900124FU	ORING	1.000 EA
004824018AF	SHELL ROTELLA OIL 10W	2.741 LB
603760001AA	LABYRINTH	1.000 EA
413480001R	RESISTOR ASSEMBLY-BLANKET	1.000 EA
413412005R	LEAD WIRE ASSY(BLANKET	1.000 EA
413412004A	SUBM MOISTURE PROBE	2.000 EA
421900124FU	ORING	1.000 EA

Parts List (continued)		
Part Number	Description	Quantity
088205002A	SUB PLT 180 88205-2WCB	1.000 EA
032130008CC	HSHCS 3/8-16 X 1.00" L	4.000 EA
032620020JD	HSSS 10-24X5/8L 304S.S.	1.000 EA
421900124FU	ORING	1.000 EA
088204001AA	BRKT,DE,180SUB 88204-1WA	1.000 EA
032018010CG	HHCS 3/8-16X1-1/4L 316SS V2T23	4.000 EA
032018006AG	HHCS 1/4-20X3/4L 316 SS	3.000 EA
064262012B	SEAL	1.000 EA
047174005C	SNAP RING	1.000 EA
047174005B	SNAP RING	1.000 EA
064262012C	SEAL	1.000 EA
032080003JB	HWHMS 10-24X3/8L PLTED	4.000 EA
032080003LB	HWHMS 1/4-20X3/8L PLTED	6.000 EA
415031017A	NUT W/WASHER 10-24 C.PLT	4.000 EA
415031017B	NUT W/WASHER1/4-20 C.P	6.000 EA
701455023H	CONTROL BOX W/SINPAC; 1 PHASE SUB	1.000 EA
047024003B	T/LUG AMP 33218	9.000 EA
700385017E	CCA	1.000 EA
421900072FU	ORING	1.000 EA
032018008BG	HHCS 5/16-18X1 BRASS-447	4.000 EA
032018006BM	HHCS 5/16-18X3/4 PLTGRN.	1.000 EA
032018006BM	HHCS 5/16-18X3/4 PLTGRN.	1.000 EA
034036013AB	LCKW 5/16 EXT.TOOTH LCKW	1.000 EA
047024003AH	T/LUG AMP 34112	4.000 EA

Product Information Packet: SUL50204SM - 2HP,1725RPM,1PH,60HZ,180TY,XPNV,V1

609181014D	HEAT SHRINK TUBING 3/4	10.000 EA
004824007K	SPECIAL PAINT	0.100 EA
033775004EA	DRSCR #6-1/4 304 S.S.	4.000 EA
034180008CD	3/16 SQ. X 1IN. KEY	1.000 EA
B3630-9	SUBM THERMOSTAT TAG	1.000 EA
B-3664002	TAG, (NON REGREASABLE)	1.000 EA



Marketing maintained PDF of MN414:

<http://www.baldor.com/support/Literature/Load.ashx/MN414?ManNumber=MN414>

